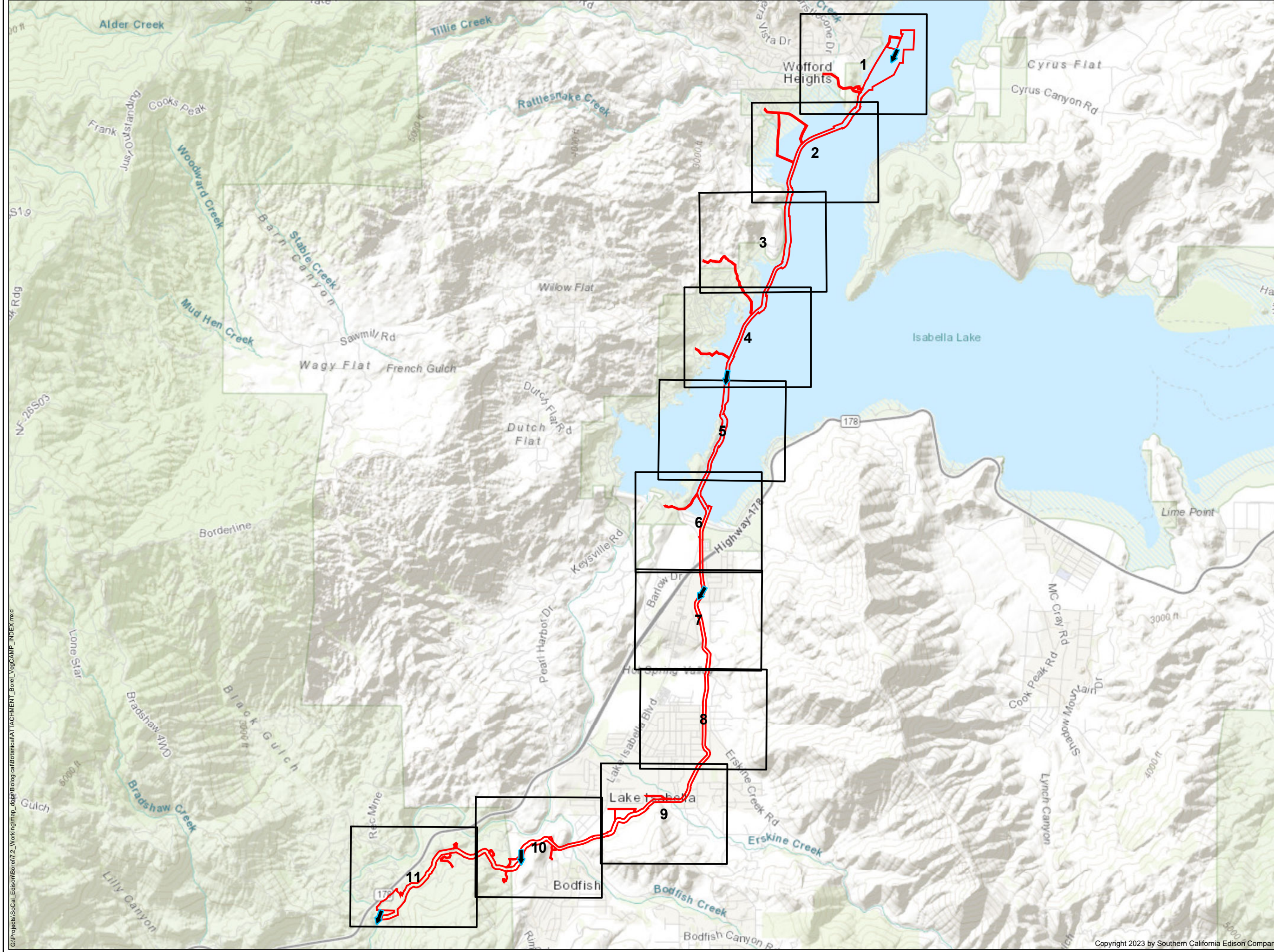


Attachment A: CDFW VegCAMP Alliances

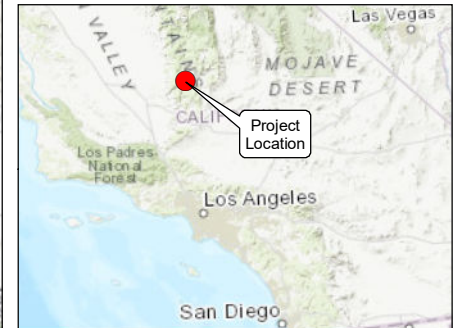
PAGE INTENTIONALLY LEFT BLANK



LEGEND

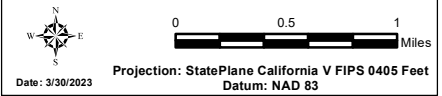
- FERC No. 382 Project Boundary
- Map Page Extent
- ↑ Flow Direction

*SOURCE: HDR (2021), SoCal Edison (2021), ESRI Topo (2021).



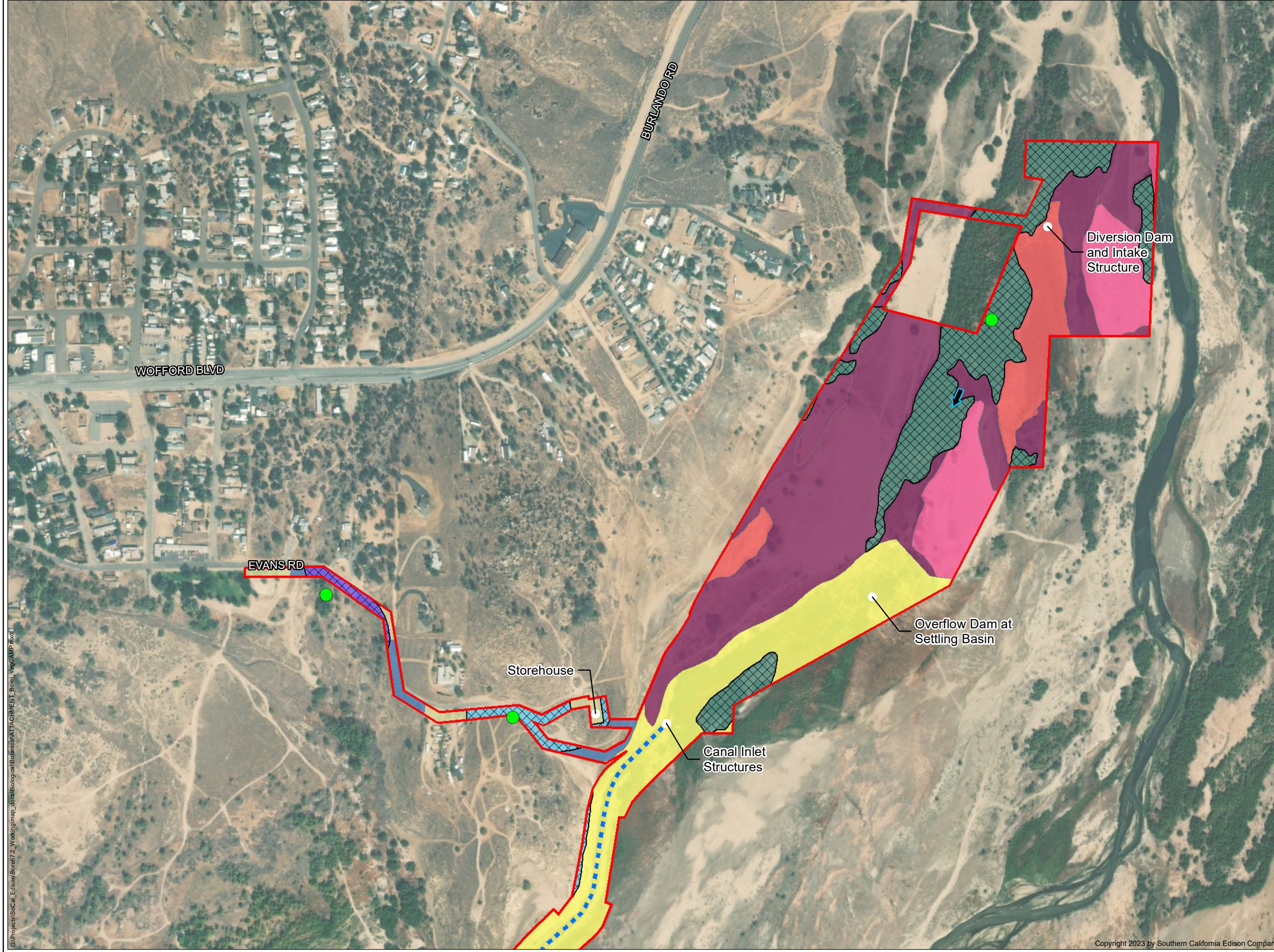
CDFW VEGCAMP ALLIANCES OVERVIEW

BOREL HYDROELECTRIC LICENSE SURRENDER PROJECT



Southern California Edison (SCE) has no reason to believe that there are any inaccuracies or defects with information incorporated in this work and make no representations of any kind, including, but not limited to, the warranties of merchantability or fitness for a particular use, nor are any such warranties to be implied, with respect to the information or data, furnished herein. No part of this map may be reproduced or transmitted in any form or by any means, electronic or mechanical, including photocopying and recording system, except as expressly permitted in writing by SCE.

G:\Projects\SoCal_Edison\Borel\2_Working\map_dgs\BIO\cal\Borel\Borel_VegCamp_INDEX.mxd



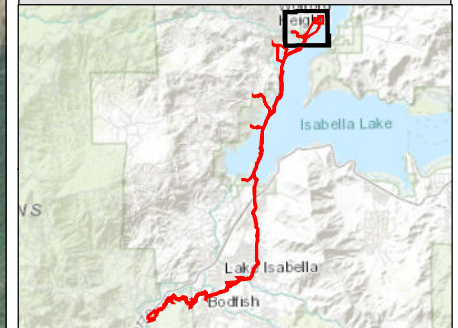
LEGEND

- FERC Project Boundary #382
- Borel Canal
- ↑ Flow Direction
- Project Feature
- CDFW Sensitive Natural Communities
- Sampling Point

VegCAMP Alliance

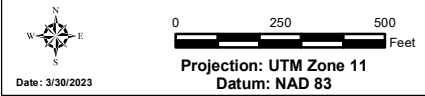
- Built Up & Urban Disturbance Mapping Unit (includes development, mines and borrow pits)
- California Annual and Perennial Grassland Macrogroup
- Californian warm temperate marsh/seep Group
- Eriogonum wrightii* Alliance
- Populus fremontii* - *Fraxinus velutina* - *Salix gooddingii* Alliance
- Reservoirs Mapping Unit
- River & Lacustrine Flats & Streambeds Mapping Unit
- Salix gooddingii* - *Salix laevigata* Alliance
- Water Mapping Unit

*SOURCE: HDR (2022), SoCal Edison (2021), CDFW (2021), ESRI Aerial Imagery.



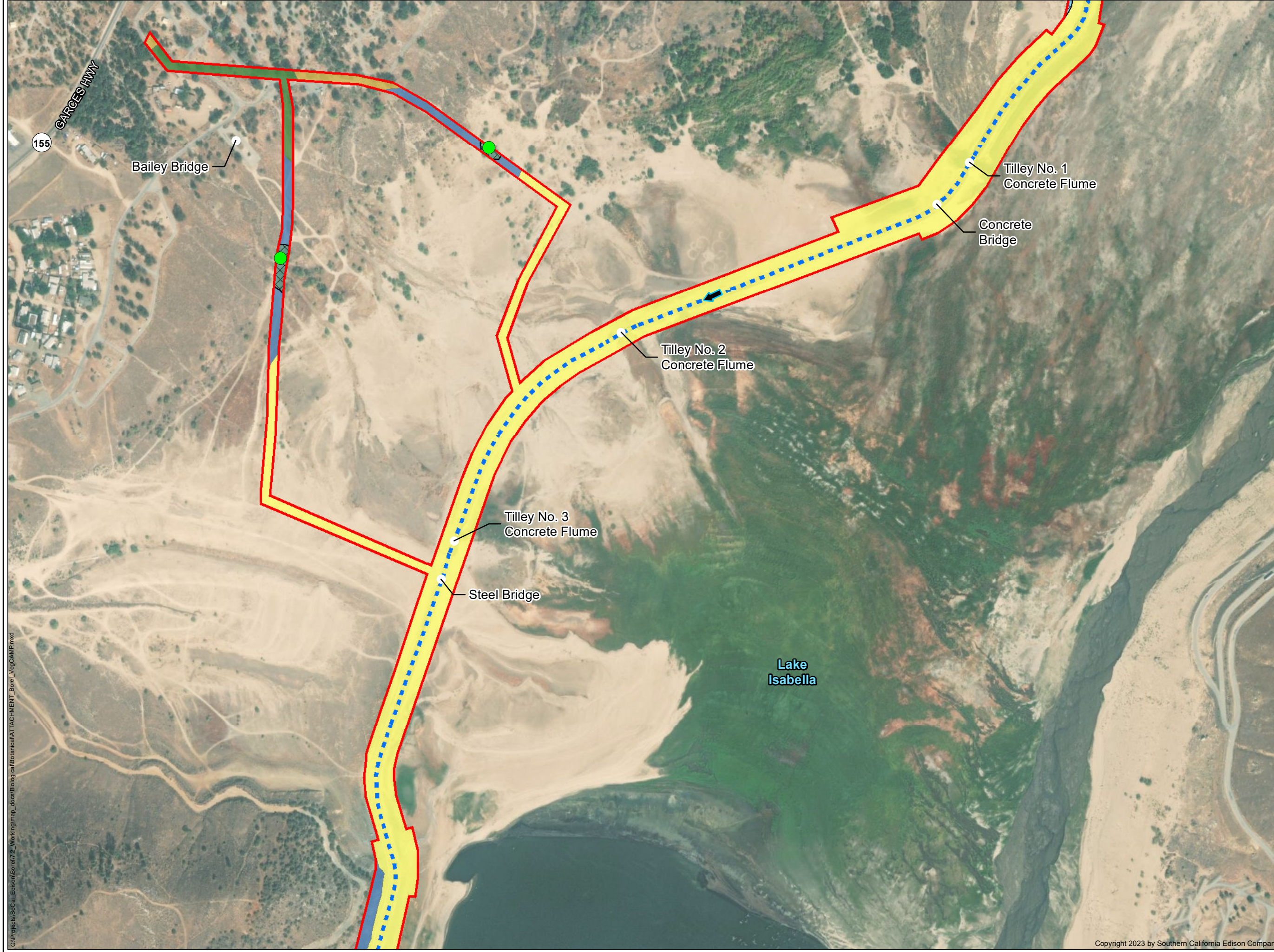
CDFW VEGCAMP ALLIANCES

BOREL HYDROELECTRIC LICENSE SURRENDER PROJECT
PAGE 1 OF 11



Southern California Edison (SCE) has no reason to believe that there are any inaccuracies or defects with information incorporated in this work and make no representations of any kind, including, but not limited to, the warranties of merchantability or fitness for a particular use, nor are any such warranties to be implied, with respect to the information or data, furnished herein. No part of this map may be reproduced or transmitted in any form or by any means, electronic or mechanical, including photocopying and recording system, except as expressly permitted in writing by SCE.

G:\Projects\SoCal_Edison\Borel\2_Working\map_data\Biological\Attachment\ATTACHMENT_Borel_VegCAMP.mxd



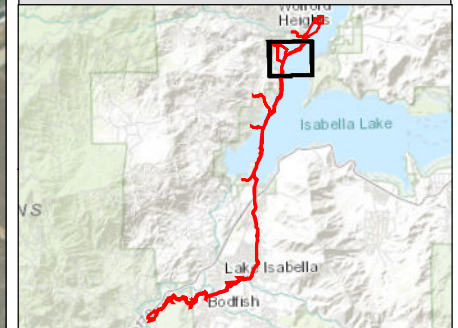
LEGEND

- FERC Project Boundary #382
- Borel Canal
- Flow Direction
- Project Feature
- CDFW Sensitive Natural Communities
- Sampling Point

VegCAMP Alliance

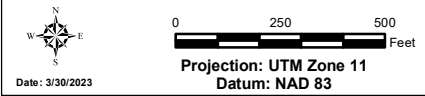
- California Annual and Perennial Grassland Macrogroup
- Eriogonum wrightii* Alliance
- Exotic Trees and Planted Trees
- Juniperus californica* Alliance
- Quercus wislizeni* (tree) Alliance
- Reservoirs Mapping Unit
- Salix gooddingii* - *Salix laevigata* Alliance

*SOURCE: HDR (2022), SoCal Edison (2021), CDFW (2021), ESRI Aerial Imagery.



CDFW VEGCAMP ALLIANCES

BOREL HYDROELECTRIC LICENSE SURRENDER PROJECT
PAGE 2 OF 11



Southern California Edison (SCE) has no reason to believe that there are any inaccuracies or defects with information incorporated in this work and make no representations of any kind, including, but not limited to, the warranties of merchantability or fitness for a particular use, nor are any such warranties to be implied, with respect to the information or data, furnished herein. No part of this map may be reproduced or transmitted in any form or by any means, electronic or mechanical, including photocopying and recording system, except as expressly permitted in writing by SCE.

G:\Projects\SoCal_Edison\Borel\2_Working\map_docs\Biological\Attachment\ATTACHMENT_Borel_VegCAMP.mxd



LEGEND

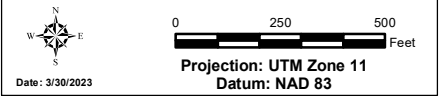
- FERC Project Boundary #382
- Borel Canal
- ↑ Flow Direction
- Project Feature
- CDFW Sensitive Natural Communities
- Sampling Point
- VegCAMP Alliance**
- Built Up & Urban Disturbance Mapping Unit (includes development, mines and borrow pits)
- California Annual and Perennial Grassland Macrogroup
- Eriogonum wrightii* Alliance
- Juniperus californica* Alliance
- Quercus wislizeni* (tree) Alliance
- Reservoirs Mapping Unit

*SOURCE: HDR (2022), SoCal Edison (2021), CDFW (2021), ESRI Aerial Imagery.



CDFW VEGCAMP ALLIANCES

BOREL HYDROELECTRIC LICENSE SURRENDER PROJECT
PAGE 3 OF 11



Southern California Edison (SCE) has no reason to believe that there are any inaccuracies or defects with information incorporated in this work and make no representations of any kind, including, but not limited to, the warranties of merchantability or fitness for a particular use, nor are any such warranties implied, with respect to the information or data, furnished herein. No part of this map may be reproduced or transmitted in any form or by any means, electronic or mechanical, including photocopying and recording system, except as expressly permitted in writing by SCE.

G:\Projects\SoCal_Edison\Borel\12_Working\map_data\Biological\anncal\ATTACHMENT_Borel_VegCAMP.mxd



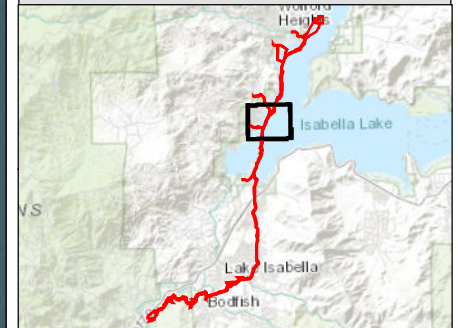
LEGEND

- FERC Project Boundary #382
- Borel Canal
- ↑ Flow Direction
- Project Feature
- CDFW Sensitive Natural Communities
- Sampling Point

VegCAMP Alliance

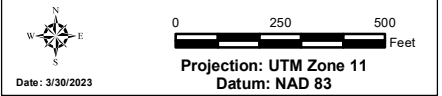
- California Annual and Perennial Grassland Macrogroup
- Eriogonum wrightii* Alliance
- Reservoirs Mapping Unit

*SOURCE: HDR (2022), SoCal Edison (2021), CDFW (2021), ESRI Aerial Imagery.



CDFW VEGCAMP ALLIANCES

BOREL HYDROELECTRIC LICENSE SURRENDER PROJECT
PAGE 4 OF 11



Southern California Edison (SCE) has no reason to believe that there are any inaccuracies or defects with information incorporated in this work and make no representations of any kind, including, but not limited to, the warranties of merchantability or fitness for a particular use, nor are any such warranties implied, with respect to the information or data, furnished herein. No part of this map may be reproduced or transmitted in any form or by any means, electronic or mechanical, including photocopying and recording system, except as expressly permitted in writing by SCE.

G:\Projects\SoCal_Edison\Borel\7.2_Working\map_docs\Biological\Botanical\ATTACHMENT_Borel_VegCAMP.mxd

155



Kern River
Concrete
Siphon

Lake
Isabella

155

178

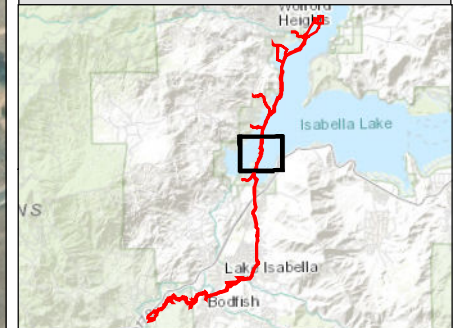
LEGEND

- FERC Project Boundary #382
- Borel Canal
- ↑ Flow Direction
- Project Feature
- Sampling Point

VegCAMP Alliance

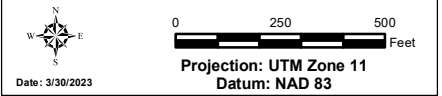
- California Annual and Perennial Grassland Macrogroup
- Reservoirs Mapping Unit

*SOURCE: HDR (2022), SoCal Edison (2021), CDFW (2021), ESRI Aerial Imagery.



CDFW VEGCAMP ALLIANCES

BOREL HYDROELECTRIC LICENSE SURRENDER PROJECT
PAGE 5 OF 11



Southern California Edison (SCE) has no reason to believe that there are any inaccuracies or defects with information incorporated in this work and make no representations of any kind, including, but not limited to, the warranties of merchantability or fitness for a particular use, nor are any such warranties implied, with respect to the information or data, furnished herein. No part of this map may be reproduced or transmitted in any form or by any means, electronic or mechanical, including photocopying and recording system, except as expressly permitted in writing by SCE.

G:\Projects\SoCal_Edison\Borel\2_Working\map_docs\Biological\Attachment\ATTACHMENT_Borel_VegCAMP.mxd



LEGEND

- FERC Project Boundary #382
- Borel Canal
- ↑ Flow Direction
- Non-Project Feature

VegCAMP Alliance

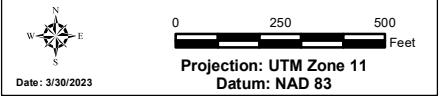
- Built Up & Urban Disturbance Mapping Unit (includes development, mines and borrow pits)
- California Annual and Perennial Grassland Macrogroup
- Reservoirs Mapping Unit

*SOURCE: HDR (2022), SoCal Edison (2021), CDFW (2021), ESRI Aerial Imagery.



CDFW VEGCAMP ALLIANCES

BOREL HYDROELECTRIC LICENSE SURRENDER PROJECT
PAGE 6 OF 11



Southern California Edison (SCE) has no reason to believe that there are any inaccuracies or defects with information incorporated in this work and make no representations of any kind, including, but not limited to, the warranties of merchantability or fitness for a particular use, nor are any such warranties implied, with respect to the information or data, furnished herein. No part of this map may be reproduced or transmitted in any form or by any means, electronic or mechanical, including photocopying and recording system, except as expressly permitted in writing by SCE.

G:\Projects\SoCal_Edison\Borel\7.2_Working\map_docs\Biological\Attachment\ATTACHMENT_Borel_VegCAMP.mxd



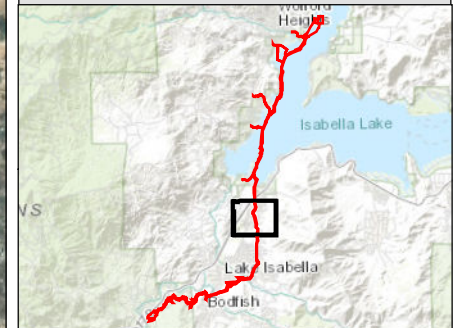
LEGEND

- FERC Project Boundary #382
- Borel Canal
- ↑ Flow Direction
- Project Feature
- Non-Project Feature
- Sampling Point

VegCAMP Alliance

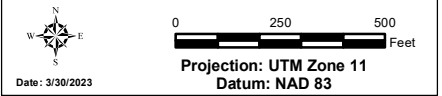
- Built Up & Urban Disturbance Mapping Unit (includes development, mines and borrow pits)
- California Annual and Perennial Grassland Macrogroup
- Pinus sabiniana* Alliance
- Quercus douglasii* Alliance
- Quercus wislizeni* (tree) Alliance

*SOURCE: HDR (2022), SoCal Edison (2021), CDFW (2021), ESRI Aerial Imagery.



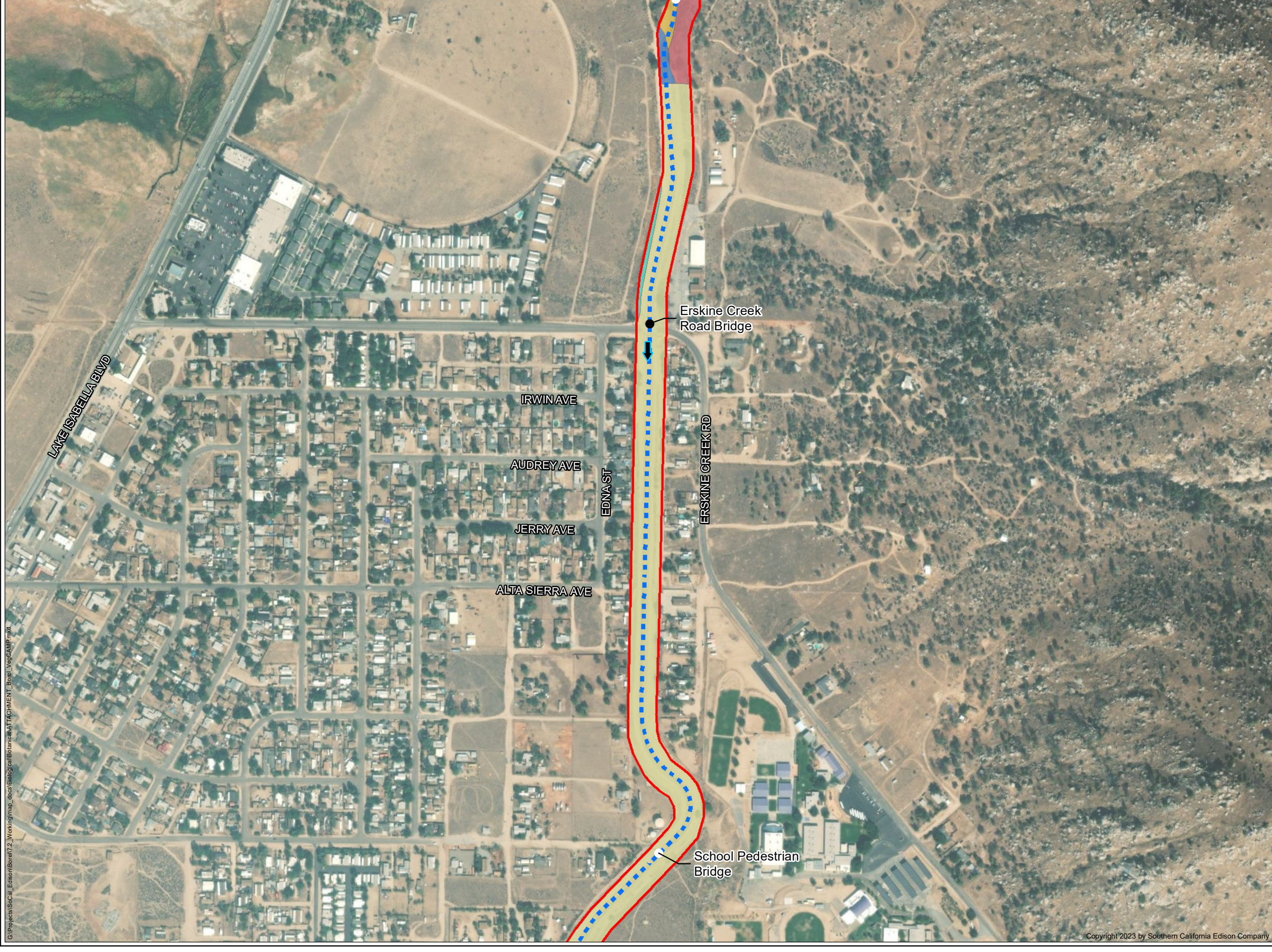
CDFW VEGCAMP ALLIANCES

BOREL HYDROELECTRIC LICENSE SURRENDER PROJECT
PAGE 7 OF 11



Southern California Edison (SCE) has no reason to believe that there are any inaccuracies or defects with information incorporated in this work and make no representations of any kind, including, but not limited to, the warranties of merchantability or fitness for a particular use, nor are any such warranties to be implied, with respect to the information or data, furnished herein. No part of this map may be reproduced or transmitted in any form or by any means, electronic or mechanical, including photocopying and recording system, except as expressly permitted in writing by SCE.

G:\Projects\SoCal_Edison\Borel\7.2_Working\map_docs\Biology\Botanical\ATTACHMENT_Borel_VegCAMP.mxd



LEGEND

- FERC Project Boundary #382
- Borel Canal
- ↑ Flow Direction
- Project Feature
- Non-Project Feature

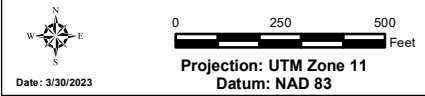
- VegCAMP Alliance**
- Built Up & Urban Disturbance Mapping Unit (includes development, mines and borrow pits)
 - California Annual and Perennial Grassland Macrogroup
 - Ericameria nauseosa* Alliance
 - Quercus douglasii* Alliance
 - Quercus wislizeni* (tree) Alliance

*SOURCE: HDR (2022), SoCal Edison (2021), CDFW (2021), ESRI Aerial Imagery.



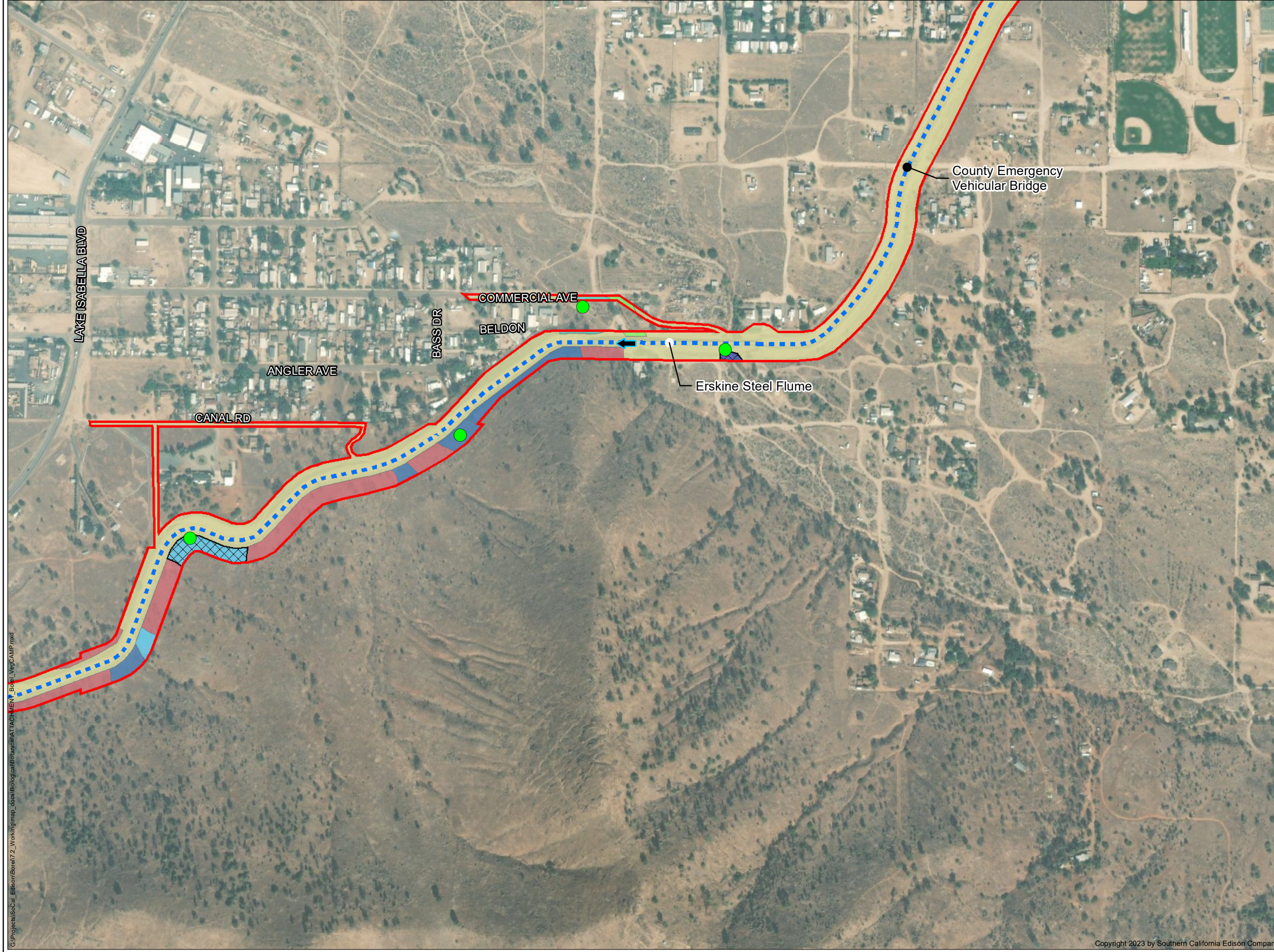
CDFW VEGCAMP ALLIANCES

BOREL HYDROELECTRIC LICENSE SURRENDER PROJECT
PAGE 8 OF 11



Southern California Edison (SCE) has no reason to believe that there are any inaccuracies or defects with information incorporated in this work and make no representations of any kind, including, but not limited to, the warranties of merchantability or fitness for a particular use, nor are any such warranties implied, with respect to the information or data, furnished herein. No part of this map may be reproduced or transmitted in any form or by any means, electronic or mechanical, including photocopying and recording system, except as expressly permitted in writing by SCE.

G:\Projects\SoCal_Edison\Borel\7.2_Working\map_docs\Borel\Borel\ATTACHMENT_Borel_VegCAMP.mxd



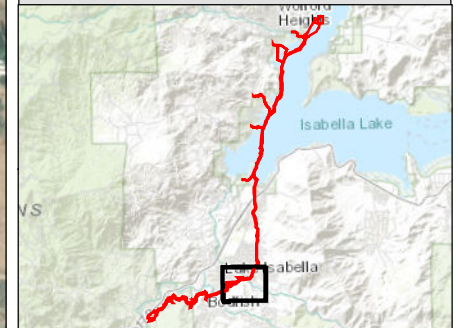
LEGEND

- FERC Project Boundary #382
- Borel Canal
- Flow Direction
- Project Feature
- Non-Project Feature
- CDFW Sensitive Natural Communities
- Sampling Point

VegCAMP Alliance

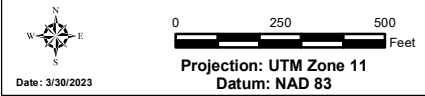
- Agriculture Mapping Unit (Without fallow annual grasses dominating)
- Built Up & Urban Disturbance Mapping Unit (includes development, mines and borrow pits)
- California Annual and Perennial Grassland Macrogroup
- Ericameria nauseosa* Alliance
- Eriogonum wrightii* Alliance
- Lepidospartum squamatum* Alliance
- Lotus scoparius - Lupinus albifrons - Eriodictyon spp.* Alliance
- Quercus douglasii* Alliance

*SOURCE: HDR (2022), SoCal Edison (2021), CDFW (2021), ESRI Aerial Imagery.



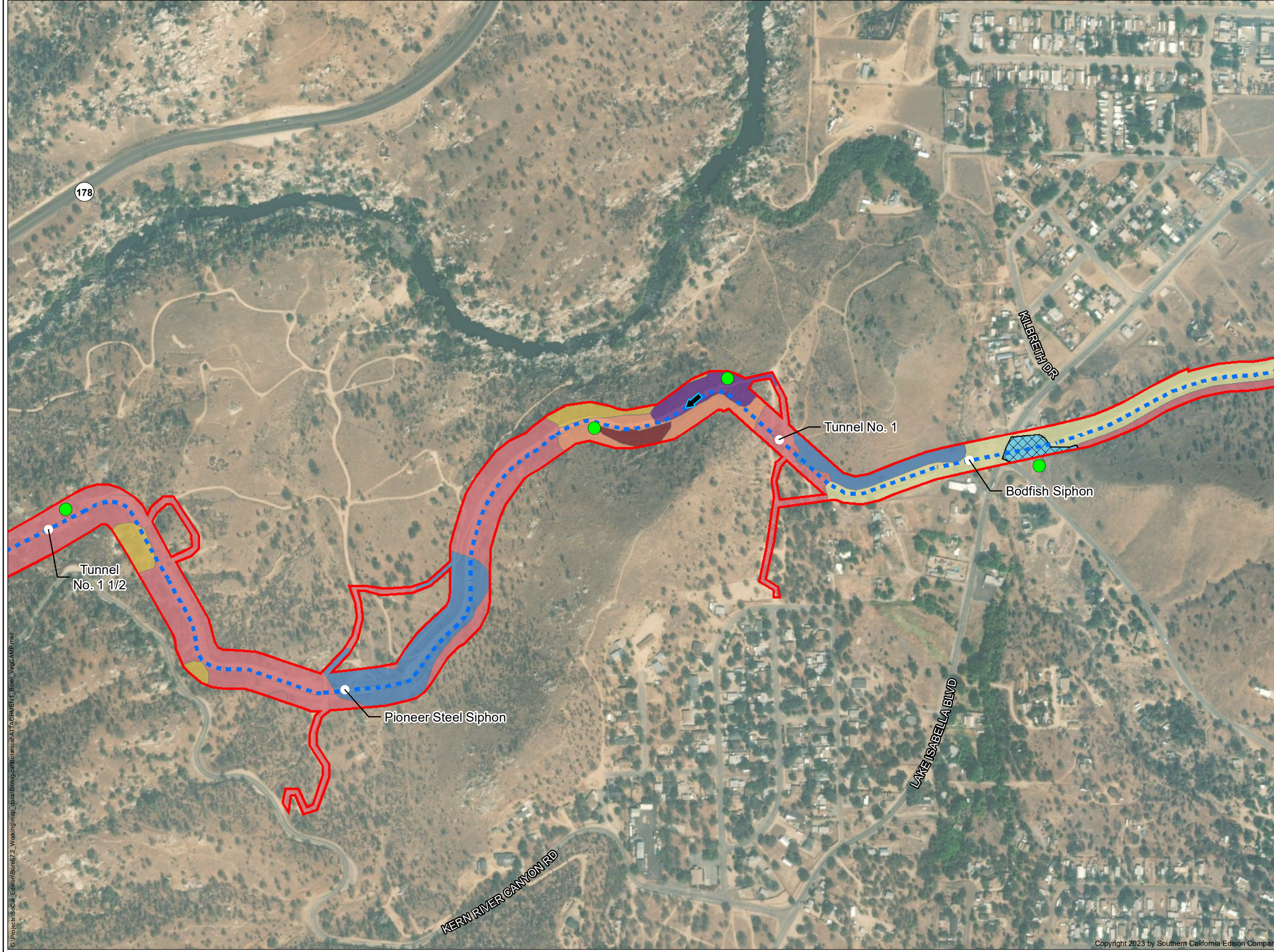
CDFW VEGCAMP ALLIANCES

BOREL HYDROELECTRIC LICENSE SURRENDER PROJECT
PAGE 9 OF 11



Southern California Edison (SCE) has no reason to believe that there are any inaccuracies or defects with information incorporated in this work and make no representations of any kind, including, but not limited to, the warranties of merchantability or fitness for a particular use, nor are any such warranties implied, with respect to the information or data, furnished herein. No part of this map may be reproduced or transmitted in any form or by any means, electronic or mechanical, including photocopying and recording system, except as expressly permitted in writing by SCE.

G:\Projects\SoCal_Edison\Borel\7.2_Working\map_docs\Borel\Borel\ATTACHMENT_Borel_VegCAMP.mxd



LEGEND

- FERC Project Boundary #382
- Borel Canal
- Flow Direction
- Project Feature
- CDFW Sensitive Natural Communities
- Sampling Point

VegCAMP Alliance

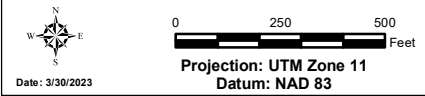
- Built Up & Urban Disturbance Mapping Unit (includes development, mines and borrow pits)
- California Annual and Perennial Grassland Macrogroup
- Ceanothus leucodermis* Alliance
- Eriogonum wrightii* Alliance
- Lotus scoparius* - *Lupinus albifrons* - *Eriodictyon* spp. Alliance
- Pinus sabiniana* Alliance
- Quercus douglasii* Alliance
- Quercus wislizeni* (tree) Alliance

*SOURCE: HDR (2022), SoCal Edison (2021), CDFW (2021), ESRI Aerial Imagery.



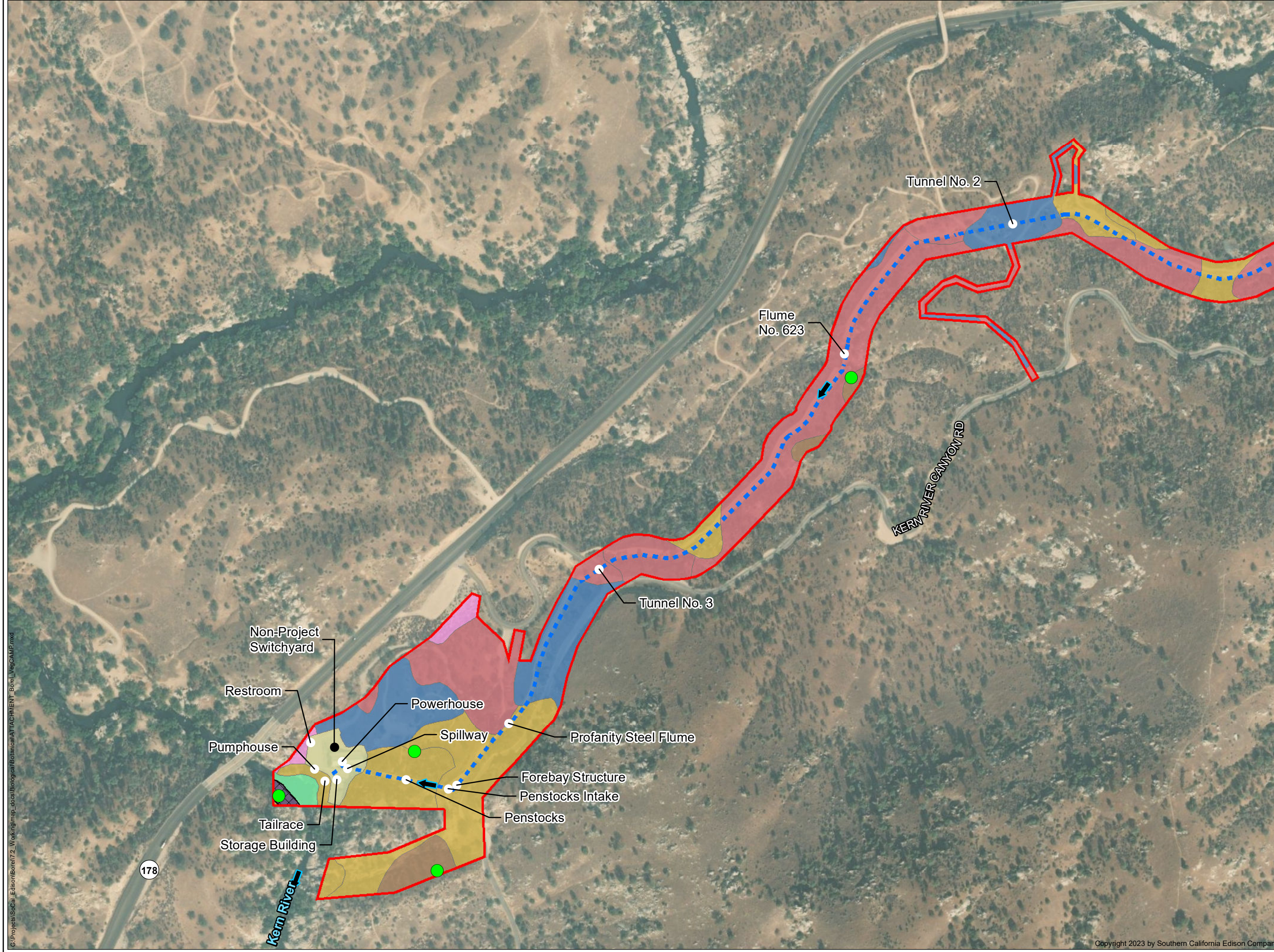
CDFW VEGCAMP ALLIANCES

BOREL HYDROELECTRIC LICENSE SURRENDER PROJECT
PAGE 10 OF 11



Southern California Edison (SCE) has no reason to believe that there are any inaccuracies or defects with information incorporated in this work and make no representations of any kind, including, but not limited to, the warranties of merchantability or fitness for a particular use, nor are any such warranties to be implied, with respect to the information or data, furnished herein. No part of this map may be reproduced or transmitted in any form or by any means, electronic or mechanical, including photocopying and recording system, except as expressly permitted in writing by SCE.

G:\Projects\SoCal_Edison\Borel\2_Working\map_docs\Biological\Attachment\ATTACHMENT_Borel_VegCAMP.mxd



LEGEND

- FERC Project Boundary #382
- Borel Canal
- ↑ Flow Direction
- Project Feature
- Non-Project Feature
- CDFW Sensitive Natural Communities
- Sampling Point


VegCAMP Alliance

- Built Up & Urban Disturbance Mapping Unit (includes development, mines and borrow pits)
- California Annual and Perennial Grassland Macrogroup
- Ceanothus cuneatus* Alliance
- Eriogonum fasciculatum* Alliance
- Perennial Stream Channel Mapping Unit
- Platanus racemosa* - *Quercus* spp. Alliance
- Quercus douglasii* Alliance
- Quercus wislizeni* (tree) Alliance

*SOURCE: HDR (2022), SoCal Edison (2021), CDFW (2021), ESRI Aerial Imagery.




- Non-Project Switchyard
- Restroom
- Pumphouse
- Storage Building
- Powerhouse
- Spillway
- Profanity Steel Flume
- Forebay Structure
- Penstocks Intake
- Penstocks
- Tailrace



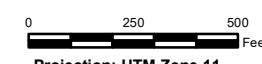
SOUTHERN CALIFORNIA EDISON
An EDISON INTERNATIONAL® Company

CDFW VEGCAMP ALLIANCES

BOREL HYDROELECTRIC LICENSE SURRENDER PROJECT
PAGE 11 OF 11



Date: 3/30/2023



Projection: UTM Zone 11
Datum: NAD 83

Southern California Edison (SCE) has no reason to believe that there are any inaccuracies or defects with information incorporated in this work and make no representations of any kind, including, but not limited to, the warranties of merchantability or fitness for a particular use, nor are any such warranties implied, with respect to the information or data, furnished herein. No part of this map may be reproduced or transmitted in any form or by any means, electronic or mechanical, including photocopying and recording system, except as expressly permitted in writing by SCE.

G:\Projects\SoCal_Edison\Borel\7.2_Working\map_docs\Biology\Borel\ATTACHMENT_Borel_VegCAMP.mxd